



Royal Earlswood Park, Redhill

£370,000





A spacious and well presented ground floor apartment. Set in the highly regarded Victoria Court and being sold with no onward chain.





Set within the prestigious Royal Earlswood Park development, this expansive ground floor apartment in Victoria Court offers a unique opportunity to enjoy elegant living in a truly idyllic setting.

Surrounded by 24 acres of beautifully maintained grounds, residents benefit from exclusive access to a private gym, indoor swimming pool, tranquil library, picturesque lake, and a delightful orchard, creating a peaceful and luxurious lifestyle.

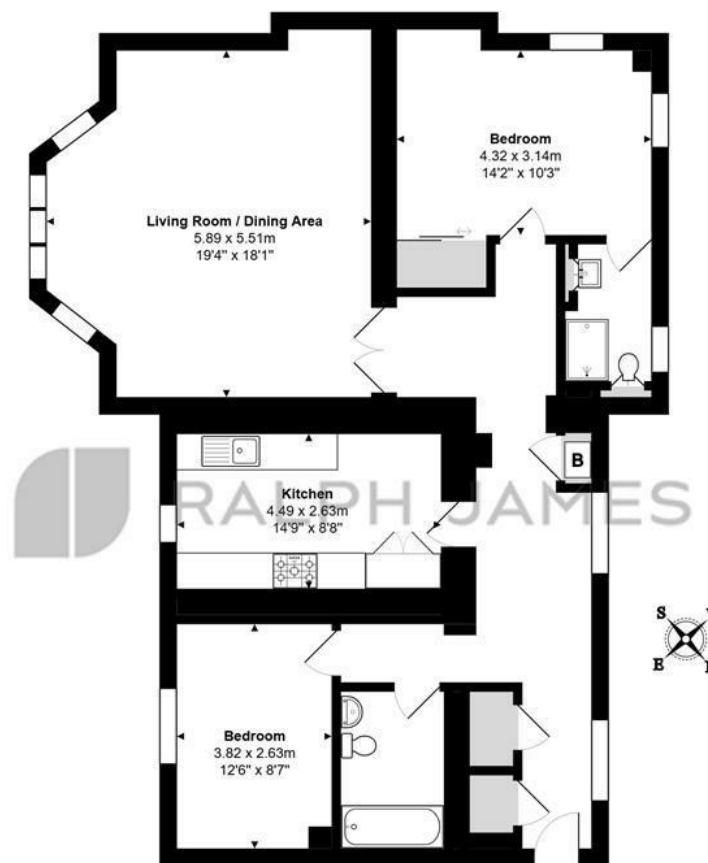
The apartment itself spans over 1200 square feet and features two generously sized double bedrooms, each with its own bathroom, providing comfort and privacy for both residents and guests. The living and dining area is a standout space, flooded with natural light through a striking bay window that frames stunning views across the landscaped grounds. The separate kitchen is well-appointed and spacious, complete with a range oven, making it ideal for both everyday use and entertaining.

Additional benefits include two allocated parking spaces and the property is offered to the market with no onward chain, presenting a straightforward and stress-free purchase opportunity in one of Redhill's most desirable developments.



Need to know

- Situated within the prestigious Royal Earlswood Park development surrounded by 24 acres of stunning private grounds.
- Two double bedroom, ground floor apartment
- Beautiful bay window in the living room with spectacular views across the landscaped gardens.
- Large kitchen featuring a range oven and ample workspace.
- Exclusive access to on-site facilities including a gym, swimming pool, library, orchard, and serene lake.
- Over 1200 square feet of internal space providing generous accommodation throughout.
- Two allocated parking spaces included with the apartment.
- Well-maintained and characterful period building within a peaceful setting.
- No onward chain
- Short walk to Earlswood station with direct links into London & Gatwick



Ground Floor

Victoria Court, Royal Earlswood Park, Redhill

Total Area: 112.2 m² ... 1208 ft²

FOR ILLUSTRATIVE PURPOSES ONLY.
All measurements are approximate and for display purposes only

Whilst every attempt has been made to ensure the accuracy of the floor plan shown, all measurements, positioning, fixtures, features, fittings and any other data shown are an approximate interpretation for illustrative purposes only and are not to scale.

No responsibility is taken for any error, omission, miss-statement or use of data shown.

The above statement applies to both 'Still Moving London LTD' and the Company or individual displaying this floor plan.

Unauthorised reproduction prohibited.

© Still Moving London LTD (www.stillmoving.london)

Interested?

redhill@ralphjames.co.uk
01737 765 555

ralphjames.co.uk

 RALPH JAMES